

ORDERING TABLE

375- 09 A M Y H F N S

Ordering Code		
Set (A & B Assemblies).....[Blank]		↓
A Assembly	A	
B Assembly	B	
Number of Wedges		
5 Wedges (3.27" Length).....	05	↓
7 Wedges (4.90" Length).....	07	
9 Wedges (6.53" Length).....	09	
Finish		
Anodize.....	A	↓
Electroless Nickel.....	N	
Chem-Film.....	C	
Mounting		
Middle Wedge.....	M	↓
Mounting Screws		
Included.....	Y	↓
Screw Drive		
3/16" Hex Head.....	H	↓
Screw Locking		
Free running Helicoil.....	F	↓
Locking Helicoil.....	L	↓
Screw Capture		
Captive Screw.....	C	↓
Non-Captive Screw.....	N	↓
Reserved for Future Options		
Standard.....	S	↓

Ordering Examples

375-09EMYHFNS - Set of 375 Series ICE-Lok™ Assemblies with 9 Electroless Nickel wedges (6.53" end wedge to end wedge length), mounting location on a middle wedge, mounting screws included, non-captive hex head screw, and non-locking Helicoil for screw.

A375-07AMYHLCS - 375 Series ICE-Lok™ A Assembly with 7 anodized wedges (4.90" end wedge to end wedge length), mounting location on a middle wedge, mounting screws included, captive hex head screw, and locking Helicoil for screw.

Custom Finished, Lengths, and other options available upon request. Please contact ACT for more information.

[10.8]
.424 EXPANDED

[12.2]
.479 EXPANDED

$\frac{3}{16}$ " HEX DRIVE

[9.5]
.375

5 WEDGES - (3.27") [83.1]
7 WEDGES - (4.90") [124.5]
9 WEDGES - (6.53") [165.9]

[10.2]
.400

2X 2-56 X 1/4" FLAT HEAD &
2X 2-56 X 1/8" FLAT HEAD MOUNTING SCREWS PROVIDED

[6.3]
.248

[5.6]
.219

[19.1]
.750

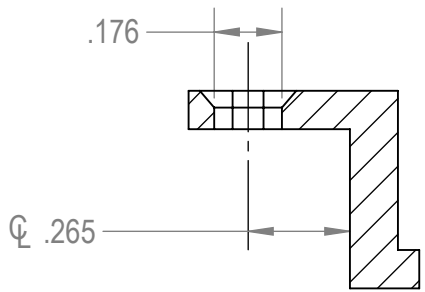
ALL INFORMATION ON DRAWING IS FOR CUSTOMER REFERENCE ONLY AND
SUBJECT TO CHANGE WITHOUT NOTICE. COPYRIGHT © 2024 ADVANCED
COOLING TECHNOLOGIES, INC. NOT TO BE USED AS THE BASIS OF DESIGN,
MANUFACTURE, OR SALE WITHOUT PRIOR WRITTEN CONSENT.



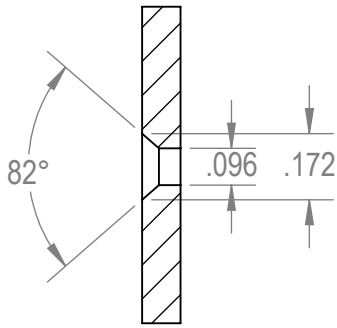
Advanced Cooling Technologies, Inc.
1046 New Holland Ave. Lancaster, PA 17601
Voice: 717.295.6061 Fax: 717.295.6064 www.1-act.com

TITLE 375 Series ICE-Lok™		
DWG. NO. 375-1000	REV. D	
SCALE 1:1	RELEASE DATE: 3/6/2024	SHEET 1 OF 2

RECOMMENDED CONDUCTION CARD SLOT DETAILS

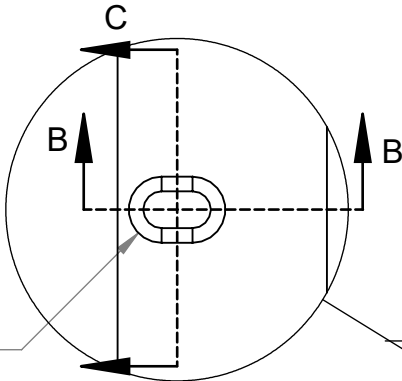


SECTION B-B
SCALE 2 : 1

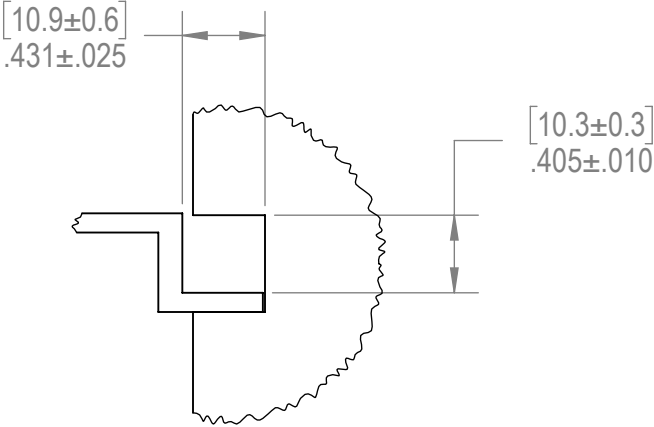
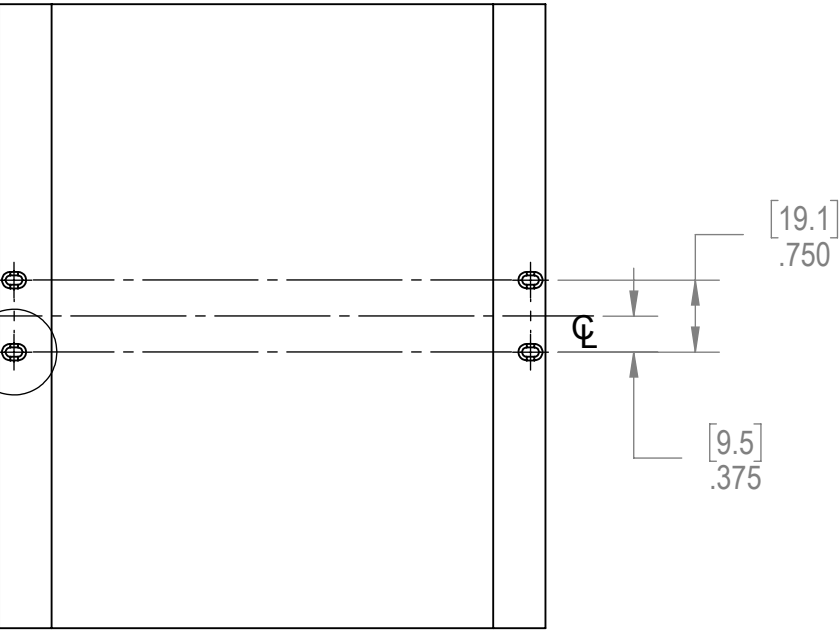


SECTION C-C
SCALE 2 : 1

4X .096 X .176 THRU ALL
 .172 X 82°



DETAIL A
SCALE 2 : 1



RECOMMENDED CARD GUIDE &
CONSTRUCTION CARD DETAILS
SCALE 1:1